

INTERNATIONAL COURT OF JUSTICE

---

**CASE CONCERNING  
ARBITRAL AWARD OF 3 OCTOBER 1899**

**CO-OPERATIVE REPUBLIC OF GUYANA**

**v.**

**BOLIVARIAN REPUBLIC OF VENEZUELA**

**GUYANA’S MEMORIAL ON THE MERITS**

VOLUME II  
MAPS AND FIGURES

---

8 MARCH 2022



VOLUME II

MAPS AND FIGURES

All maps are for illustrative purposes only

Figure 2.1	Map of Guyana	Figure 4.12	Map Presented at the 1945 United Nations Conference in San Francisco
Figure 2.2	Guyana’s Major Rivers	Figure 4.13	Physical and Political Map of Venezuela (1947)
Figure 2.3	Guyana’s Mountain Ranges	Figure 4.14	Physical and Political Map of Venezuela (1950)
Figure 2.4	Map of Essequibo and Demerary (Demerara) Rivers (ca.1770), Highlighting Ft. Kykoveral	Figure 4.15	Physical and Political Map of Venezuela (1955)
Figure 2.5	Map of Guiana by William Blaeuw (1667), Highlighting the Extent of Dutch Authority and Control	Figure 4.16	Official Map of Venezuela (1956)
Figure 3.1	Map Depicting the Expeditions of Robert Schomburgk (1835-1839)	Figure 4.17	Official Map of Venezuela (1960)
Figure 3.2	Map Depicting the Expeditions of Robert and Richard Schomburgk (1841-1844)	Figure 4.18	Official Map of Venezuela (1962)
Figure 3.3	Boundary Lines of British Guiana (1896)	Figure 5.1	Physical and Political Map of Venezuela (1965)
Figure 3.4	Sketch Map of the 1899 Arbitral Award and British Claim		
Figure 4.1	Sketch Map Indicating the Location of Punta Playa		
Figure 4.2	Photograph of Boundary Marker in the Barima-Waini Region (2017)		
Figure 4.3	Photograph with Close-Up of Boundary Marker (2017)		
Figure 4.4	Cover Page of Map Produced by the Joint Boundary Commission in 1905		
Figure 4.5	1905 Map Produced by the Joint Boundary Commission, Demarcating the Boundary Line between British Guiana and Venezuela		
Figure 4.6	Physical and Political Map of Venezuela, Commissioned by President J. V. Gomez (1911)		
Figure 4.7	Tri-Junction Point Marker between Venezuela, British Guiana and Brazil		
Figure 4.8	Physical and Political Map of Venezuela, Commissioned by President J. V. Gomez (1928)		
Figure 4.9	Physical and Political Map of Venezuela (1937)		
Figure 4.10	Atlas of Venezuela (1940)		
Figure 4.11	Map of the Boundary between British Guiana and Brazil (1939)		

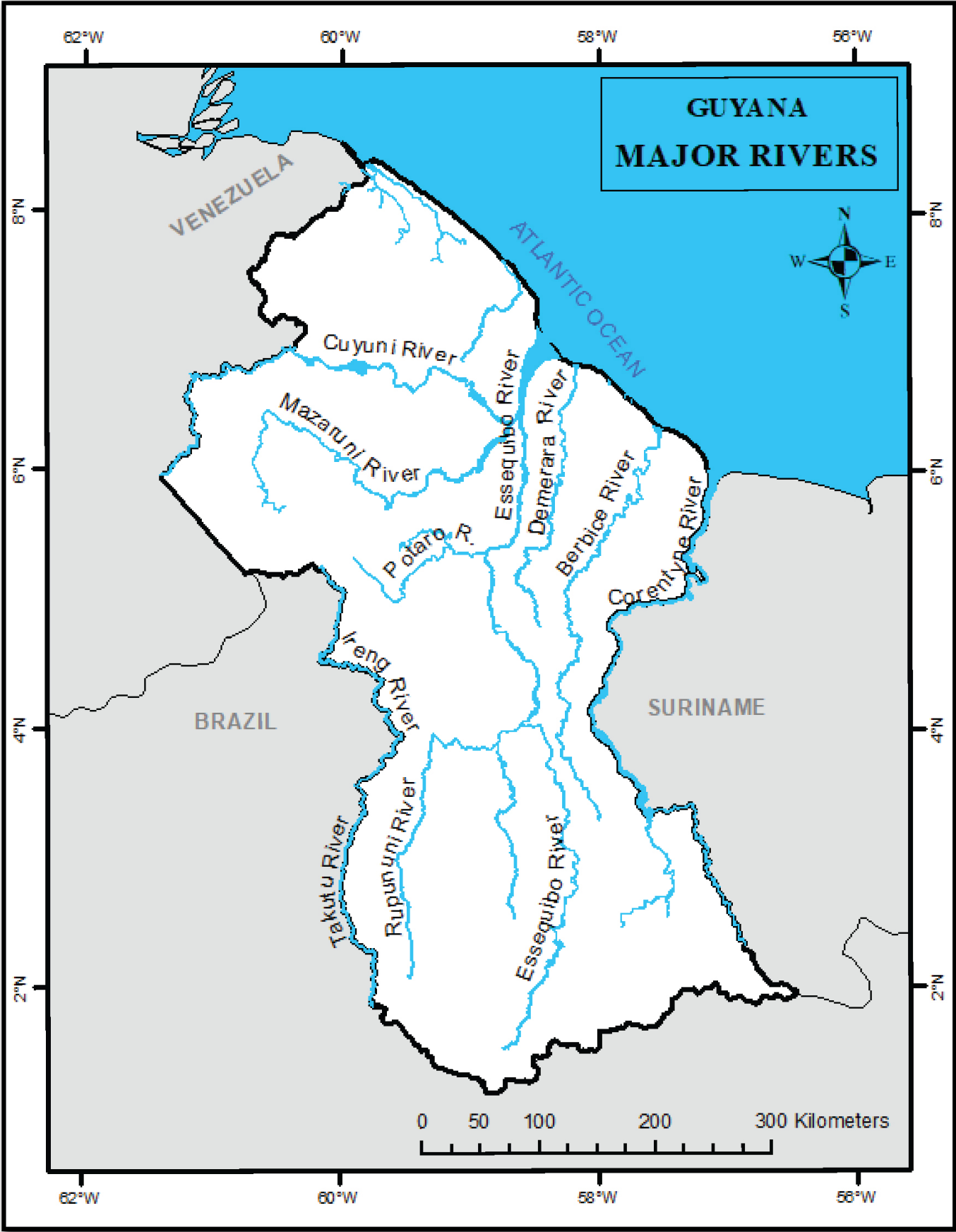
Figure 2.1. Map of Guyana



Source: Worldometer, “Map of Guyana (Road)” (2018).

Figure 2.1

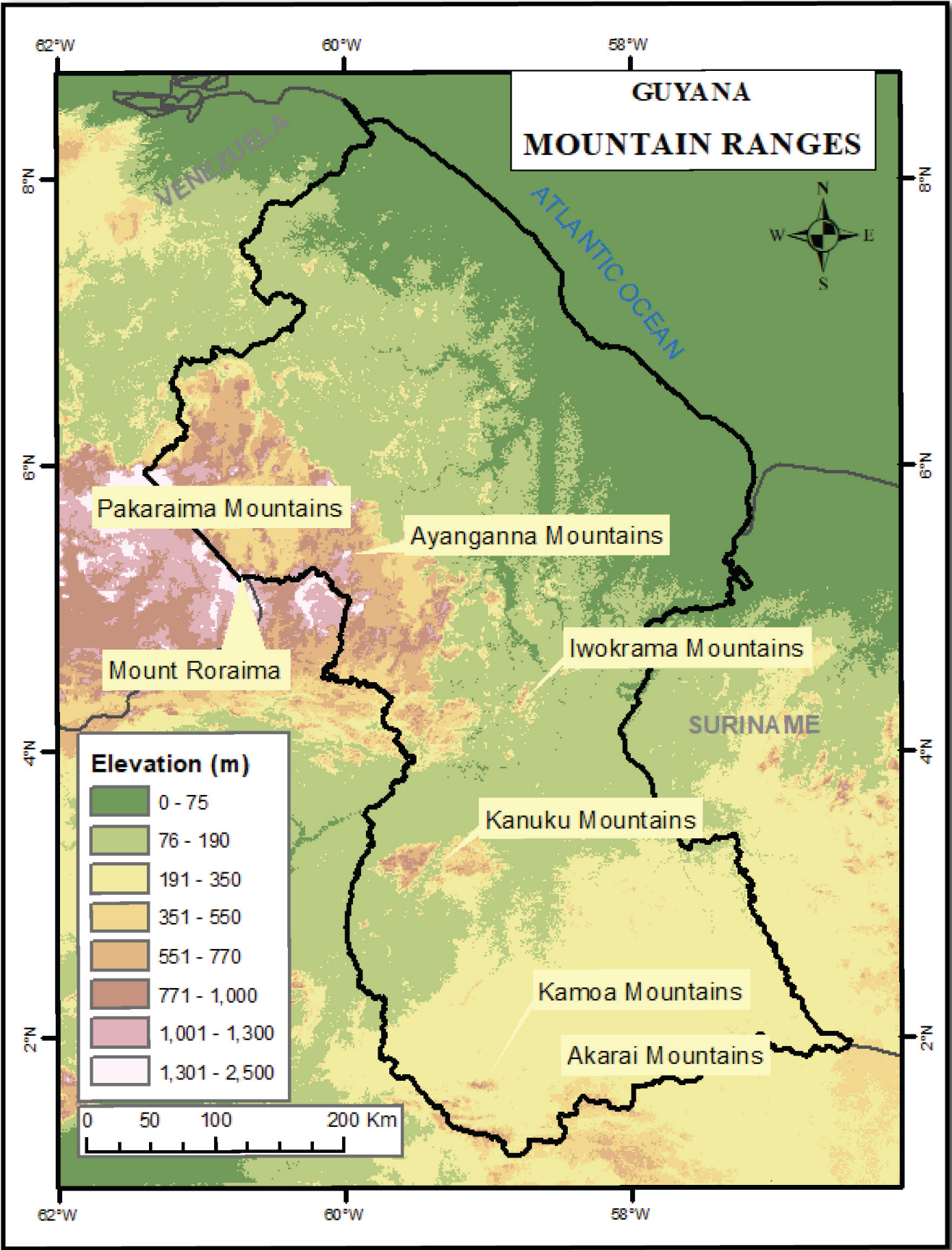
Figure 2.2. Guyana’s Major Rivers



Source: Guyana Lands and Surveys Commission, “Fact Page on Guyana: Major Rivers” (undated).

Figure 2.2

Figure 2.3. Guyana’s Mountain Ranges

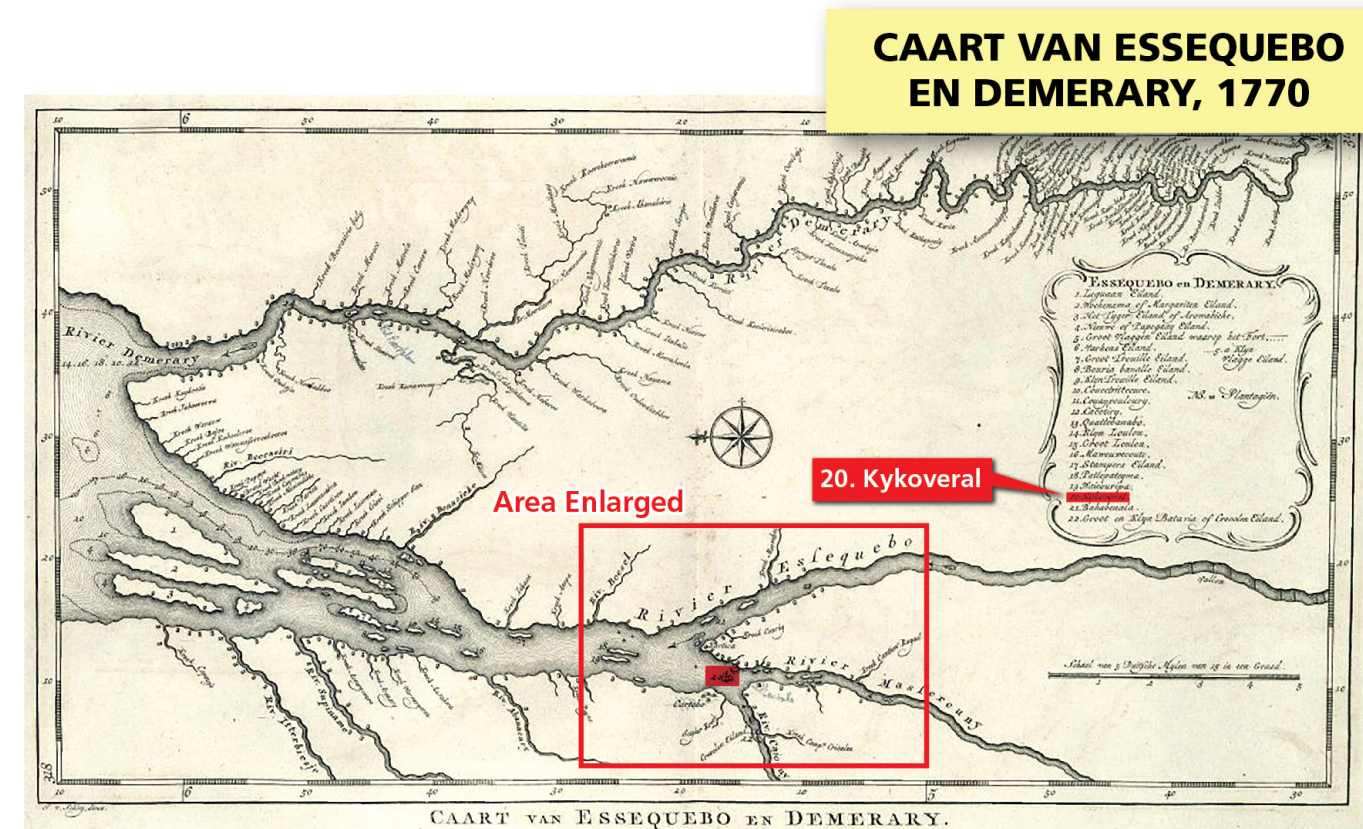


Source: Guyana Lands and Surveys Commission, “Fact Page on Guyana: Mountain Ranges” (undated).

Figure 2.3



**Figure 2.4. Map of Essequibo and Demerary (Demerara) Rivers (ca. 1770), Highlighting Ft. Kykoveral**



Source: Jacobus van der Schley, “Caart van Essequibo en Demerary” (G. Tielenburg, ca. 1770).

**Figure 2.4**



Figure 2.5. Map of Guiana by William Blaeuw (1667), Highlighting the Extent of Dutch Authority and Control

MAP OF GUIANA, 1667

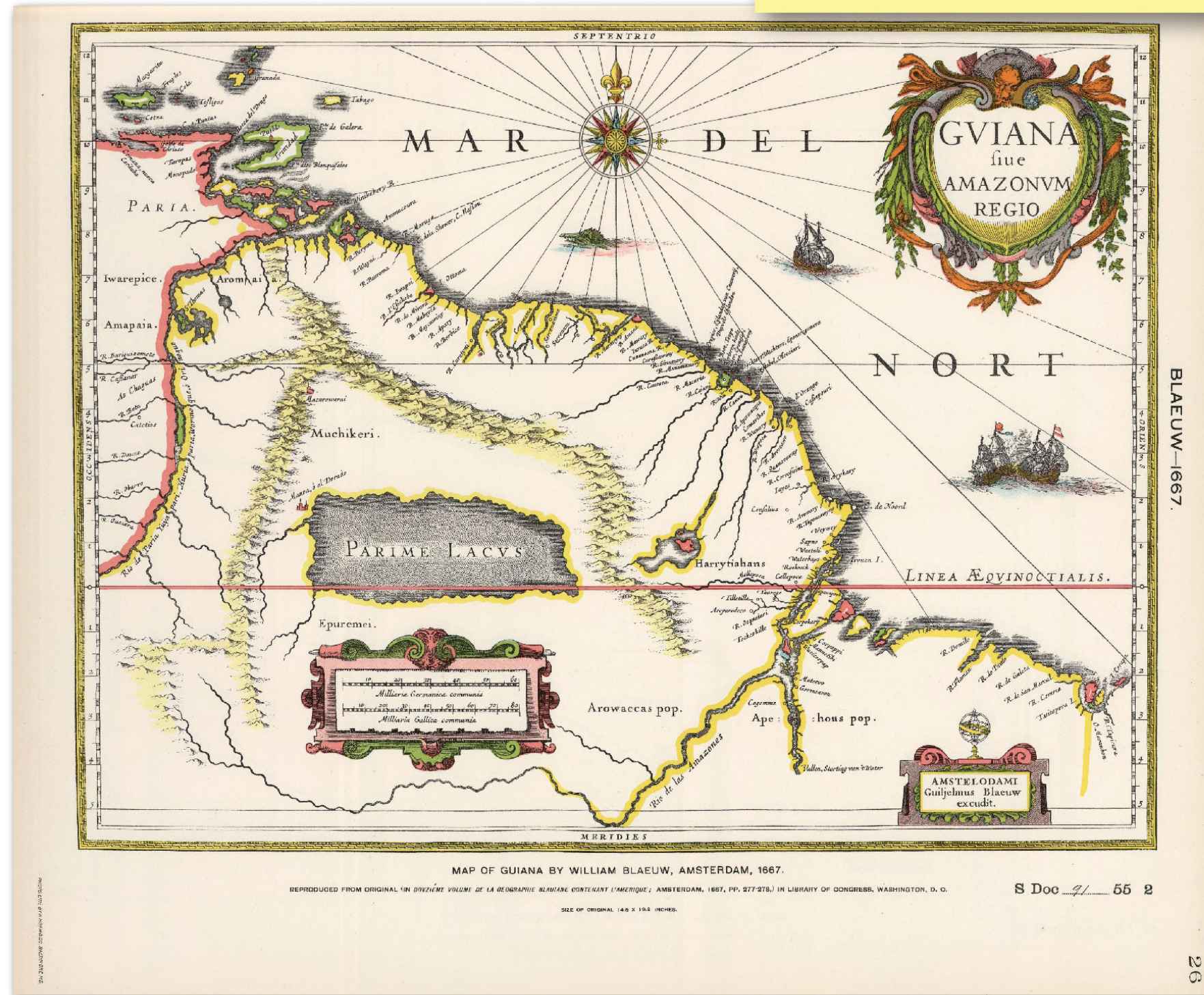
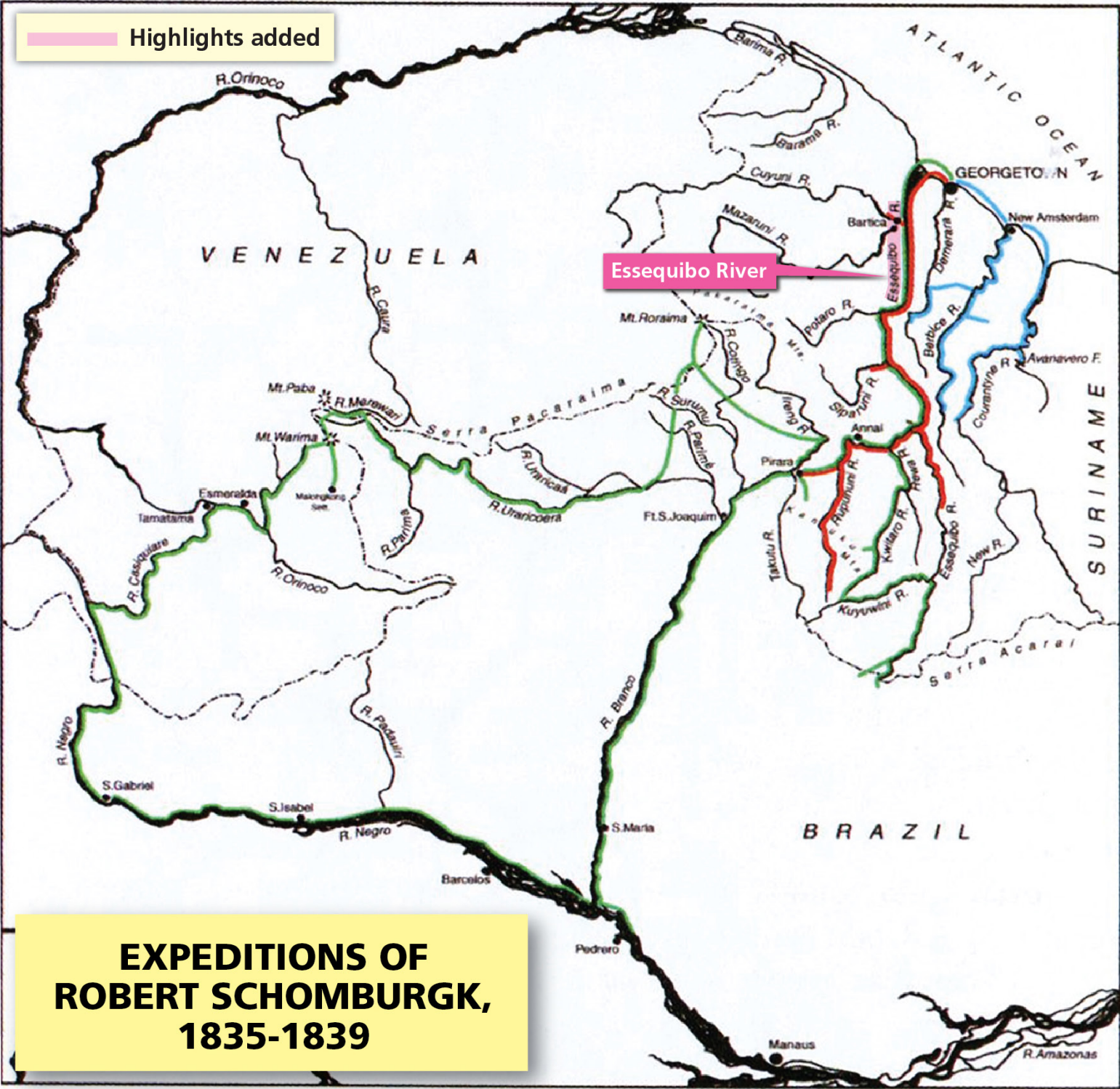




Figure 3.1. Map Depicting the Expeditions of Robert Schomburgk (1835-1839)



Map 1. The expeditions of Robert Schomburgk 1835–1839.

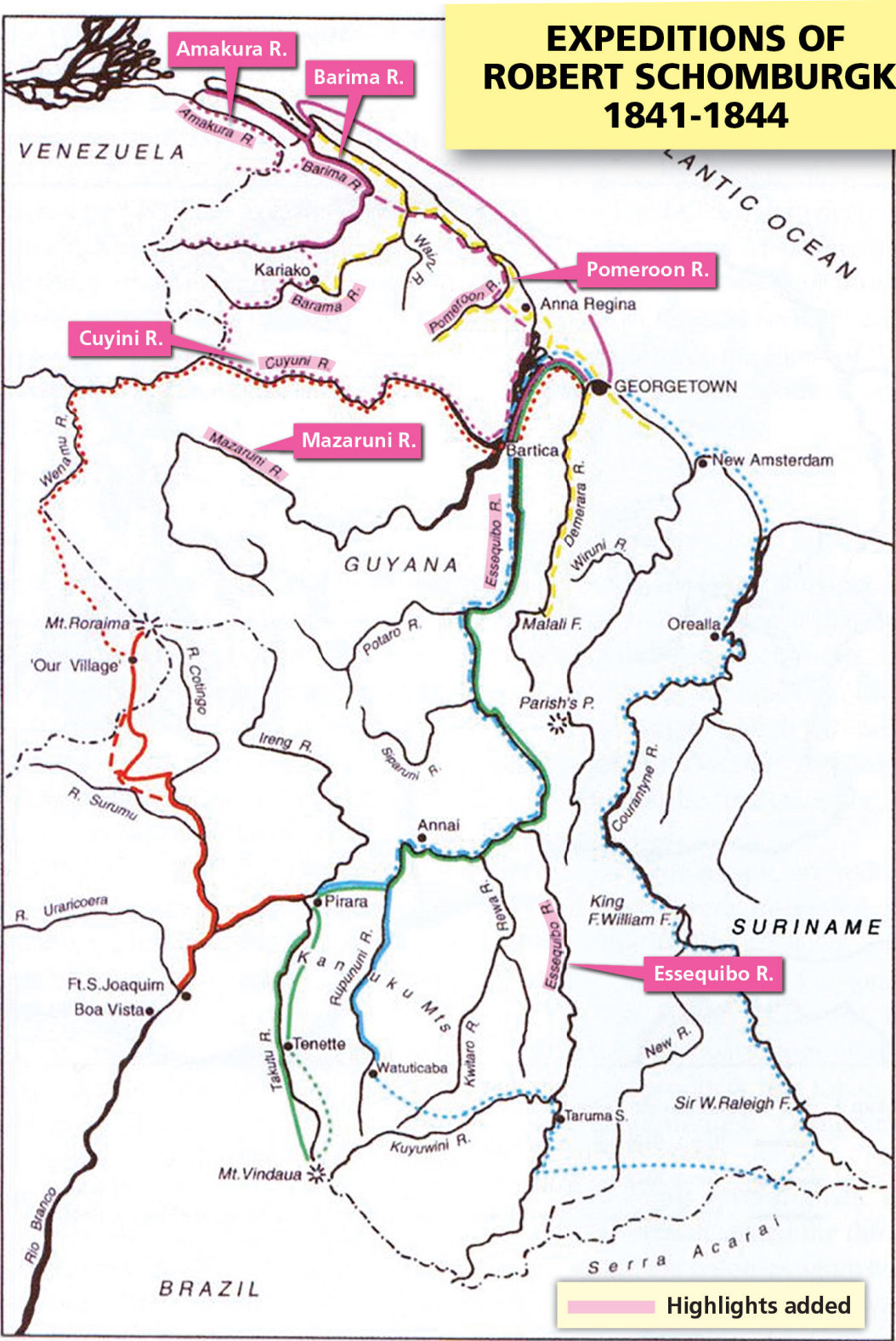
- Trip 1: Expedition to the Upper Rupununi River.
- Trip 2: Ascent of the Courantyne and Berbice Rivers.
- Trip 3: Expedition to the source of the Essequibo River, Mount Roraima and Esmeralda.

Source: “Making Sense of the Schomburgk Expeditions”, Plant Press of the Smithsonian Museum of Natural History, Vol. 14, No. 2 (Apr. 2011).

Figure 3.1



Figure 3.2. Map Depicting the Expeditions of Robert and Richard Schomburgk (1841-1844)

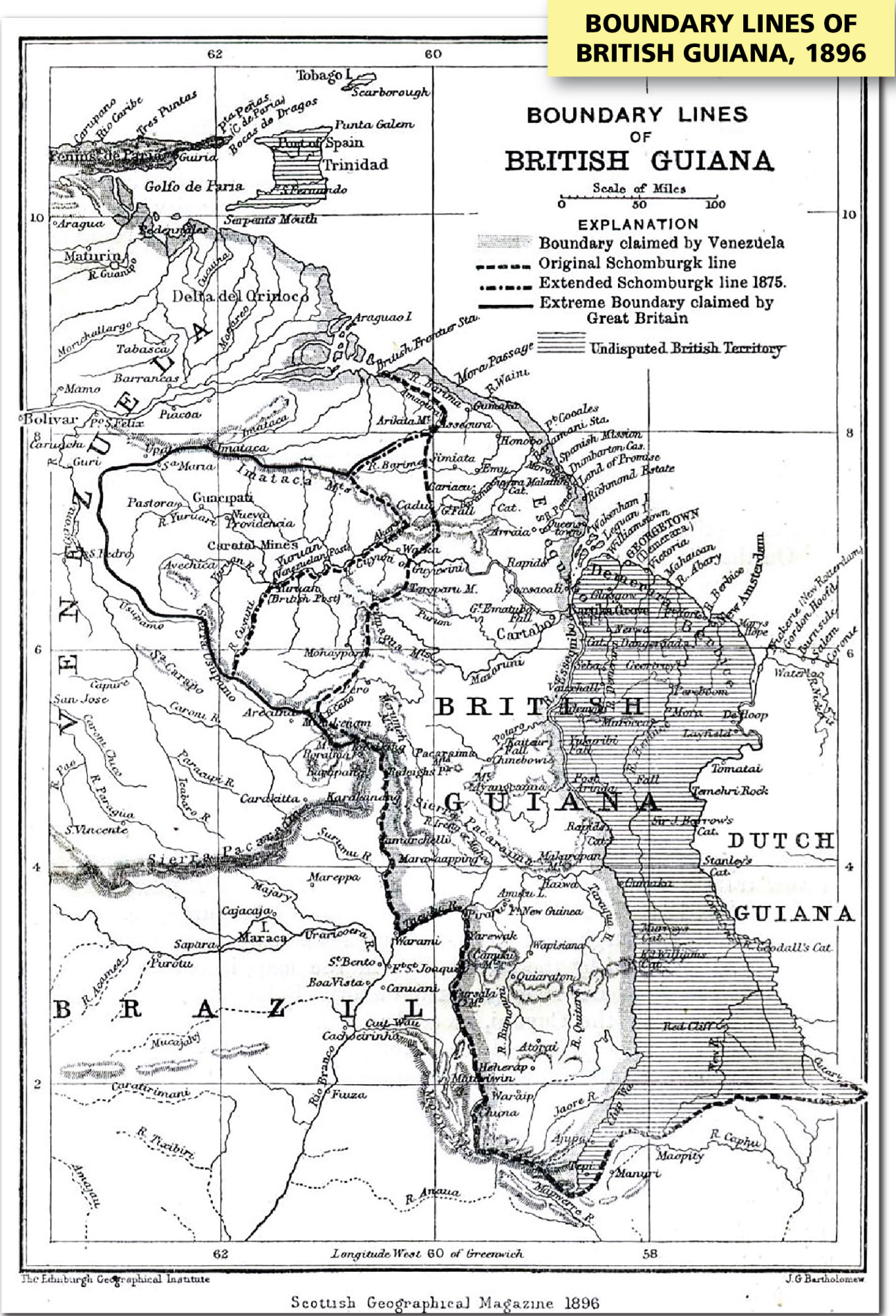


Source: “Making Sense of the Schomburgk Expeditions”, Plant Press of the Smithsonian Museum of Natural History, Vol. 14, No. 2 (Apr. 2011).

Figure 3.2



Figure 3.3. Boundary Lines of British Guiana (1896)



Source: *Scottish Geographical Magazine*,  
“Boundary Lines of British Guiana” (1896).

Figure 3.3

Figure 3.4. Sketch Map of the 1899 Arbitral Award and British Claim



Figure 3.4



Figure 4.1. Sketch Map Indicating the Location of Punta Playa



Figure 4.1

Figure 4.2. Photograph of Boundary Marker in the Barima-Waini Region (2017)



Figure 4.3. Photograph with Close-Up of Boundary Marker (2017)



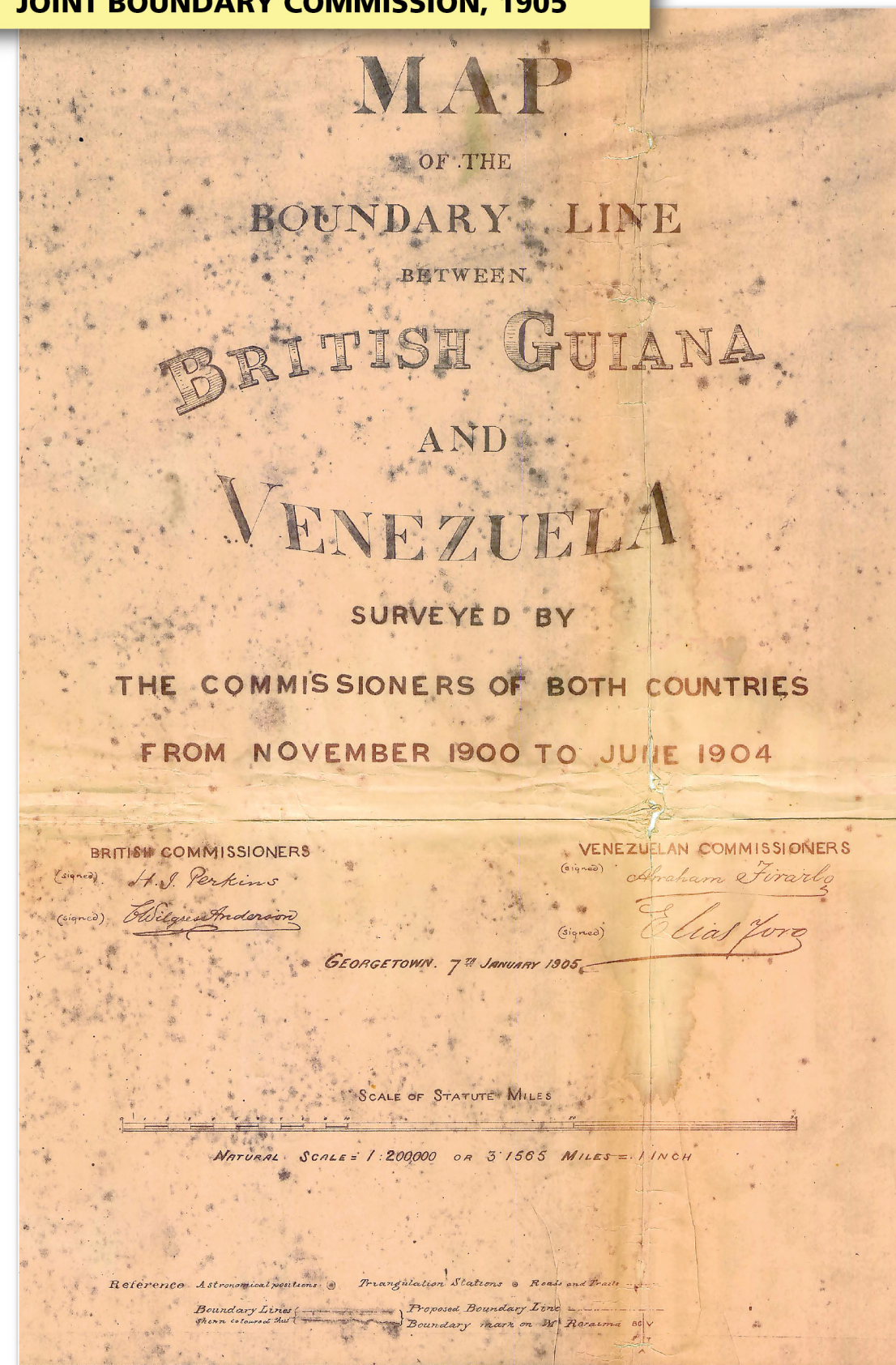
Source: *Guyana Times*, "Guyana-Venezuela boundary marker located in Region 1" (4 Dec. 2017).

Figure 4.2  
Figure 4.3



Figure 4.4. Cover Page of Map Produced by the Joint Boundary Commission in 1905

COVER PAGE OF THE MAP PRODUCED BY THE  
JOINT BOUNDARY COMMISSION, 1905

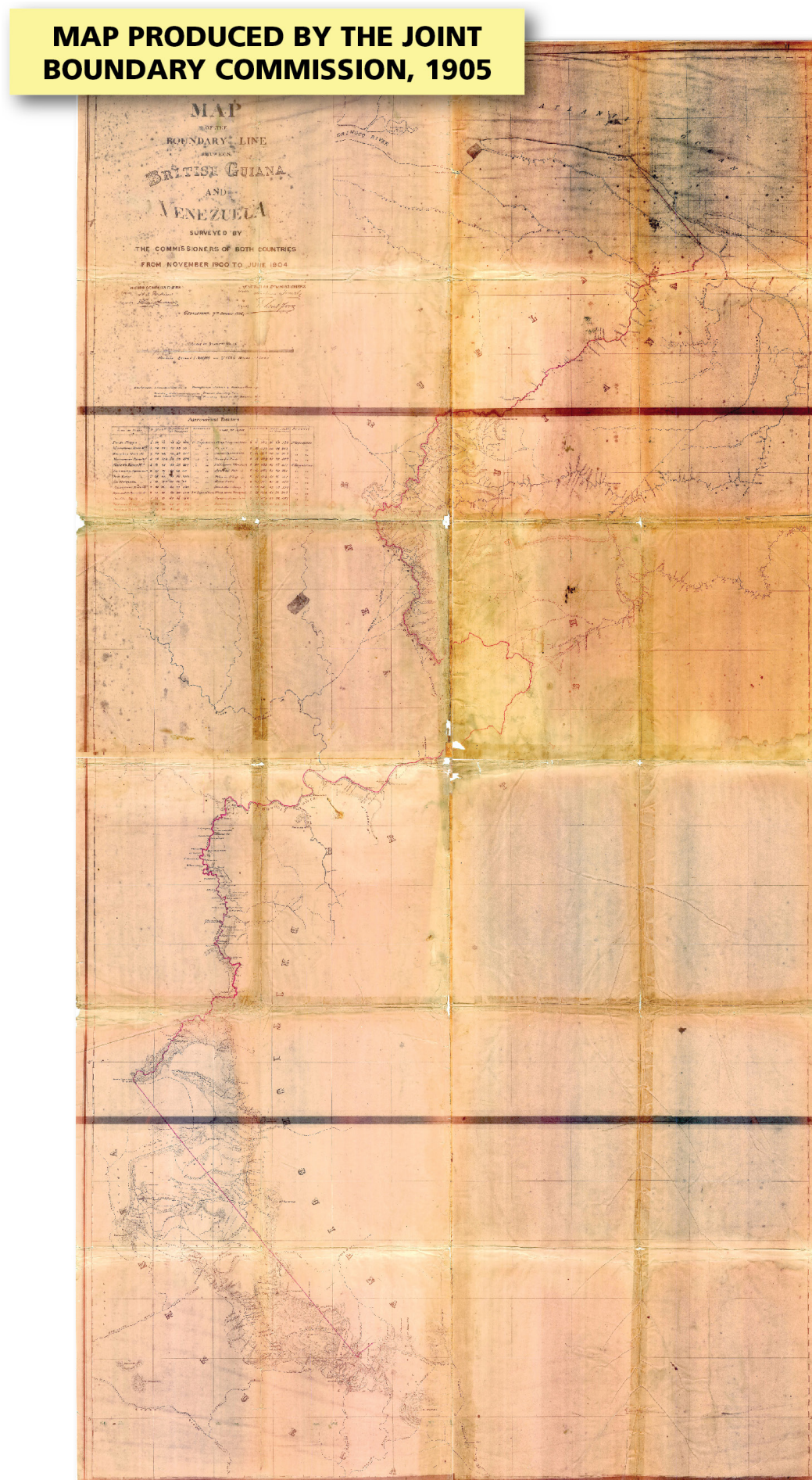


Source: "Map of the Boundary Line between British Guiana and Venezuela, Surveyed by the Commissioners of Both Countries from November 1900 to June 1904, Georgetown" (7 Jan. 1905).

Figure 4.4



**Figure 4.5. 1905 Map Produced by the Joint Boundary Commission, Demarcating the Boundary Line between British Guiana and Venezuela**

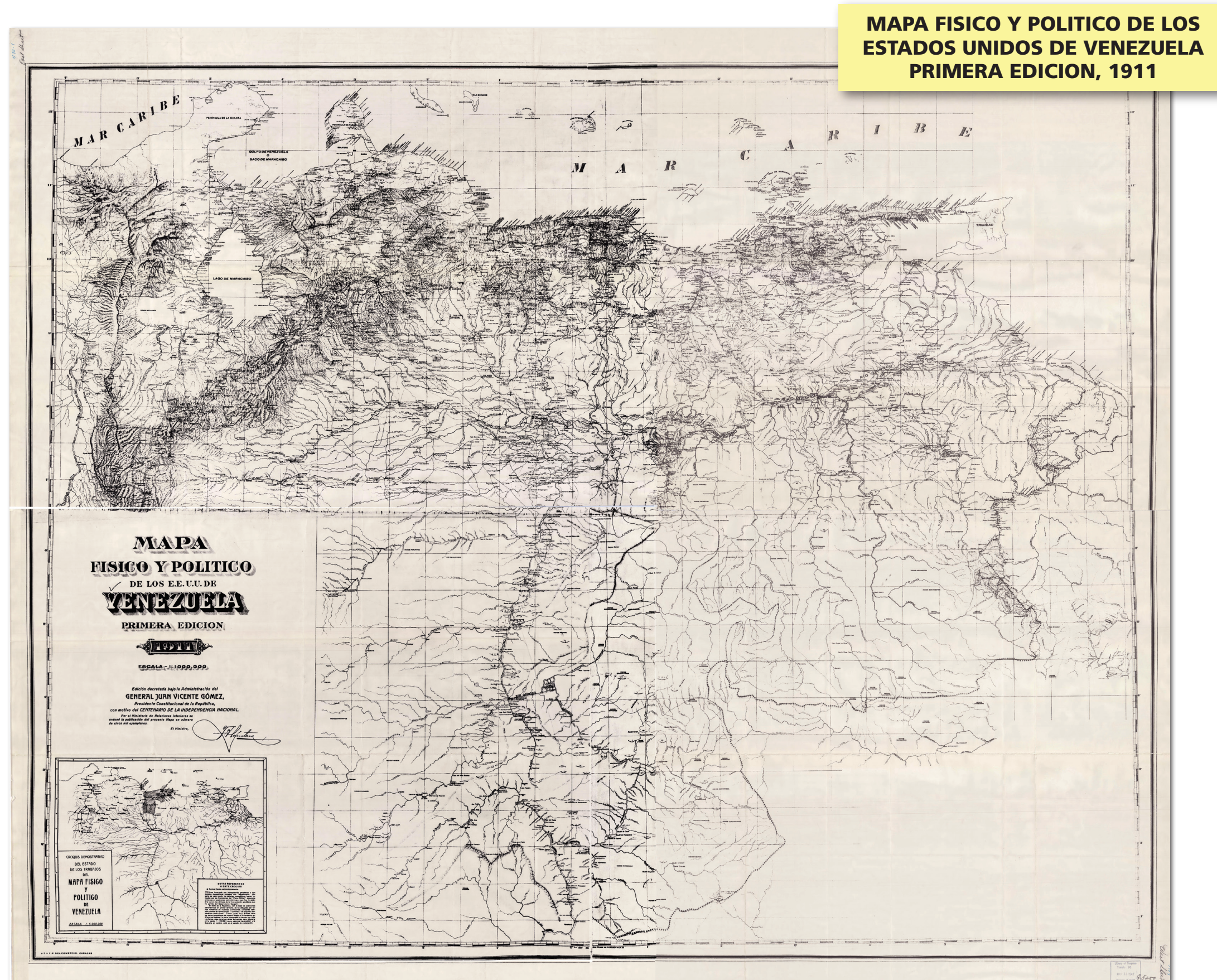


Source: “Map of the Boundary Line between British Guiana and Venezuela, Surveyed by the Commissioners of Both Countries from November 1900 to June 1904, Georgetown” (7 Jan. 1905).

**Figure 4.5**



Figure 4.6. [Original Map] Physical and Political Map of Venezuela, Commissioned by President J. V. Gomez (1911)

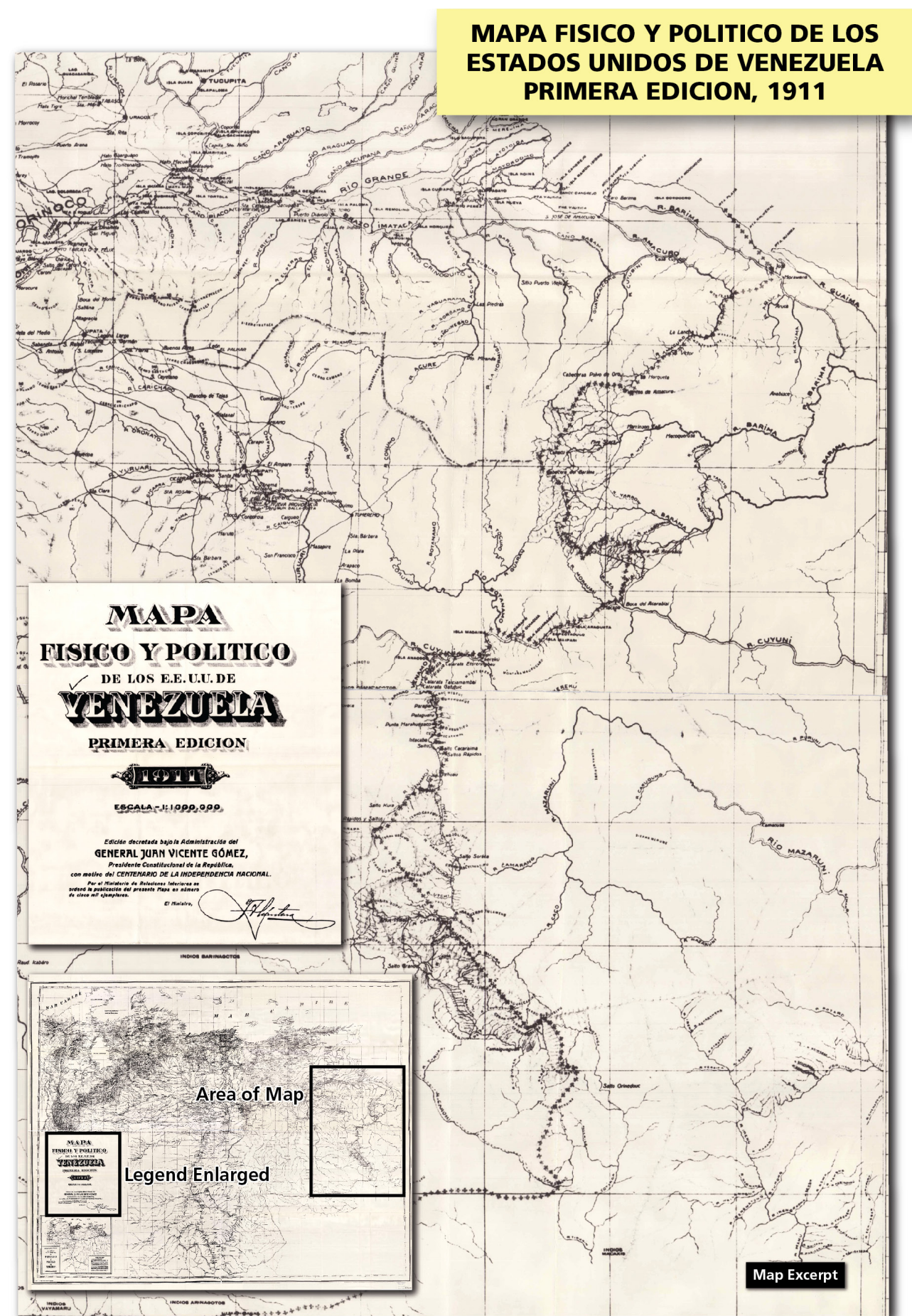


Source: Department of Internal Affairs of Venezuela, "Mapa Físico y Político de los E.E.U.U de Venezuela, 1: 1,000,000" (1a ed., 1911).

Figure 4.6



Figure 4.6. [Enlargement] Physical and Political Map of Venezuela, Commissioned by President J. V. Gomez (1911)

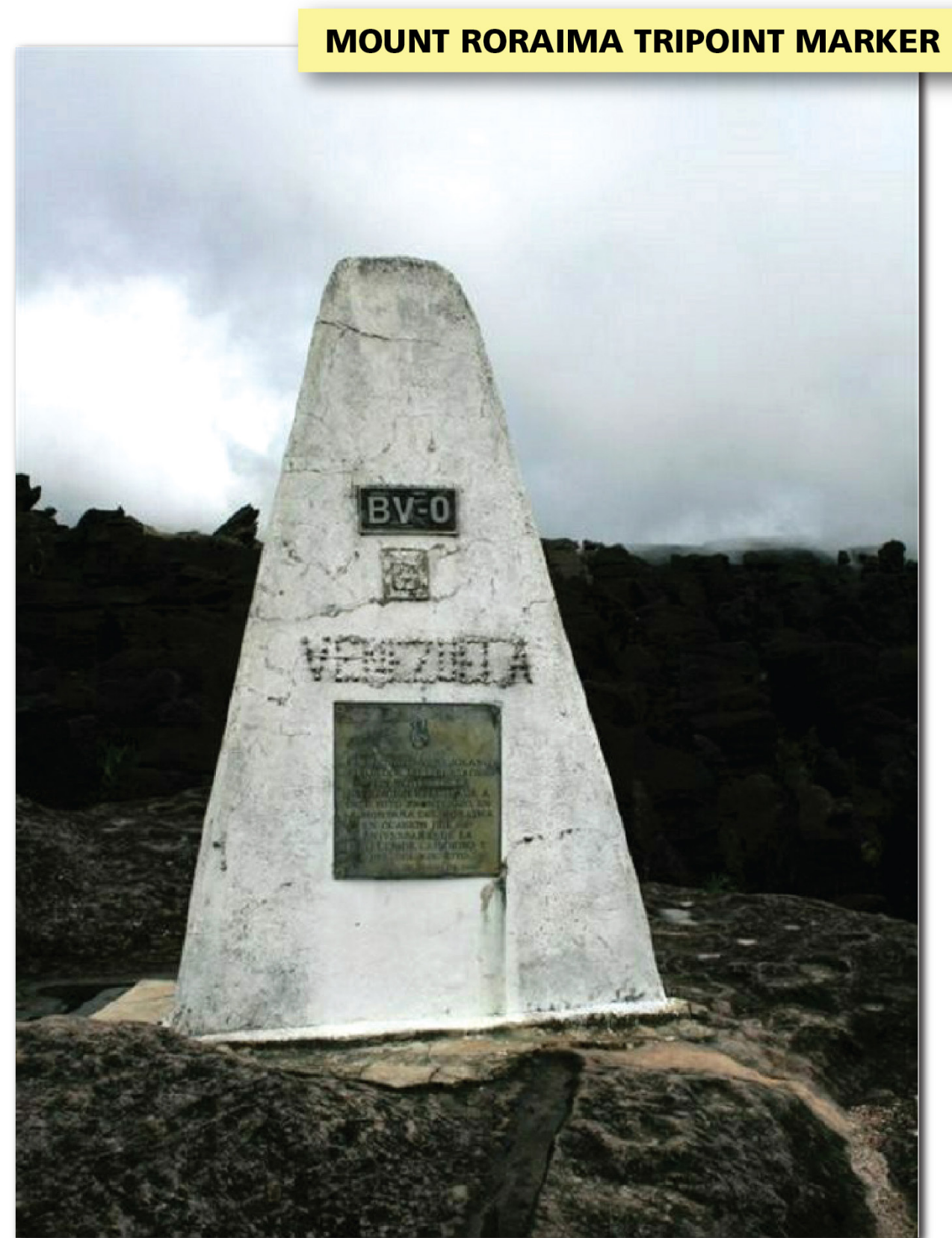


Source: Department of Internal Affairs of Venezuela, “Mapa Físico y Político de los E.E.U.U de Venezuela, 1: 1,000,000” (1a ed., 1911).

Figure 4.6



**Figure 4.7. Tri-Junction Point Marker between Venezuela, British Guiana and Brazil**



Source: “Mount Roraima Tripoint Marker, Venezuela’s Side” (undated).

**Figure 4.7**

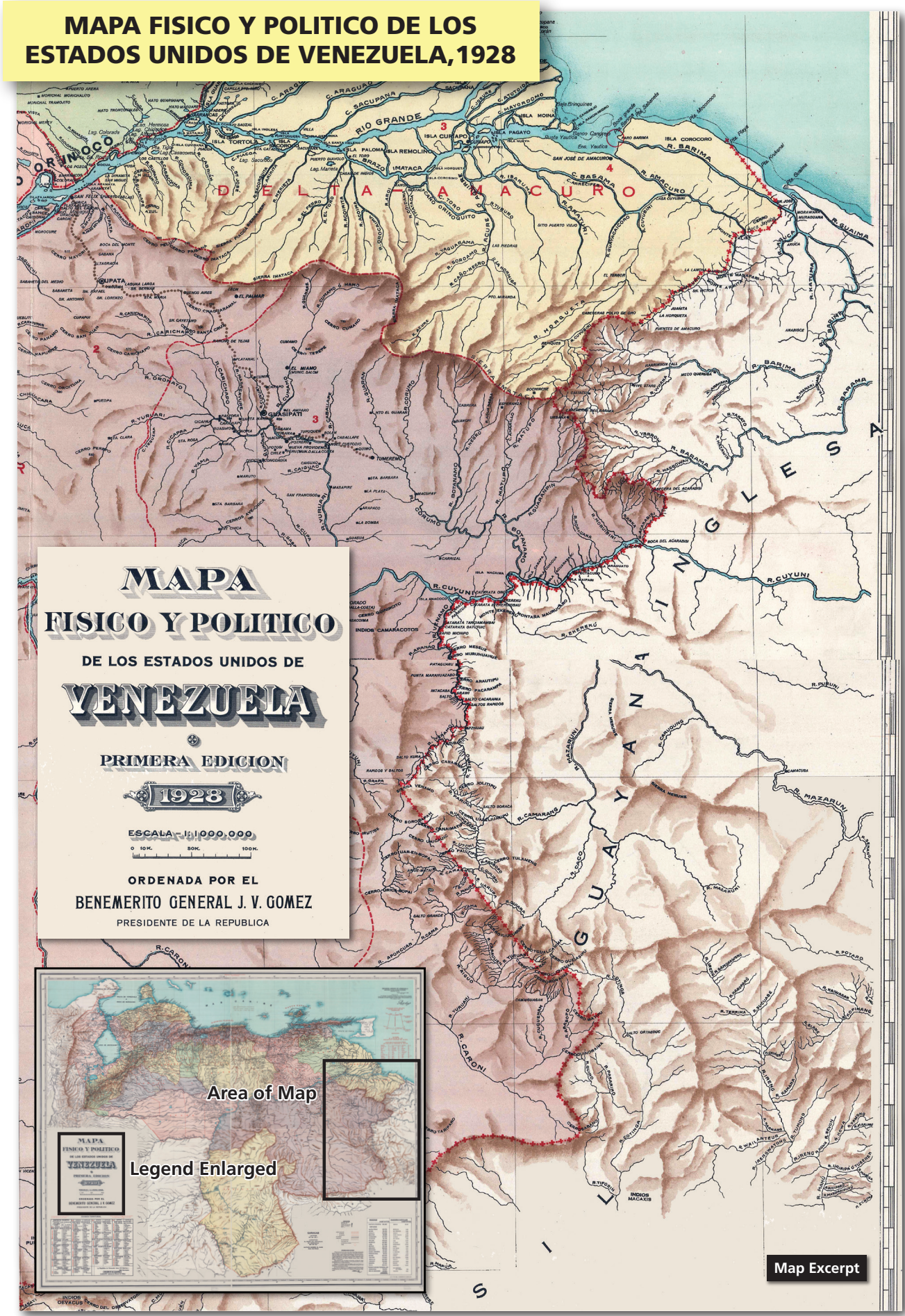


[illegible]

**Figure 4.8**



Figure 4.8. [Enlargement] Physical and Political Map of Venezuela, Commissioned by President J. V. Gomez (1928)

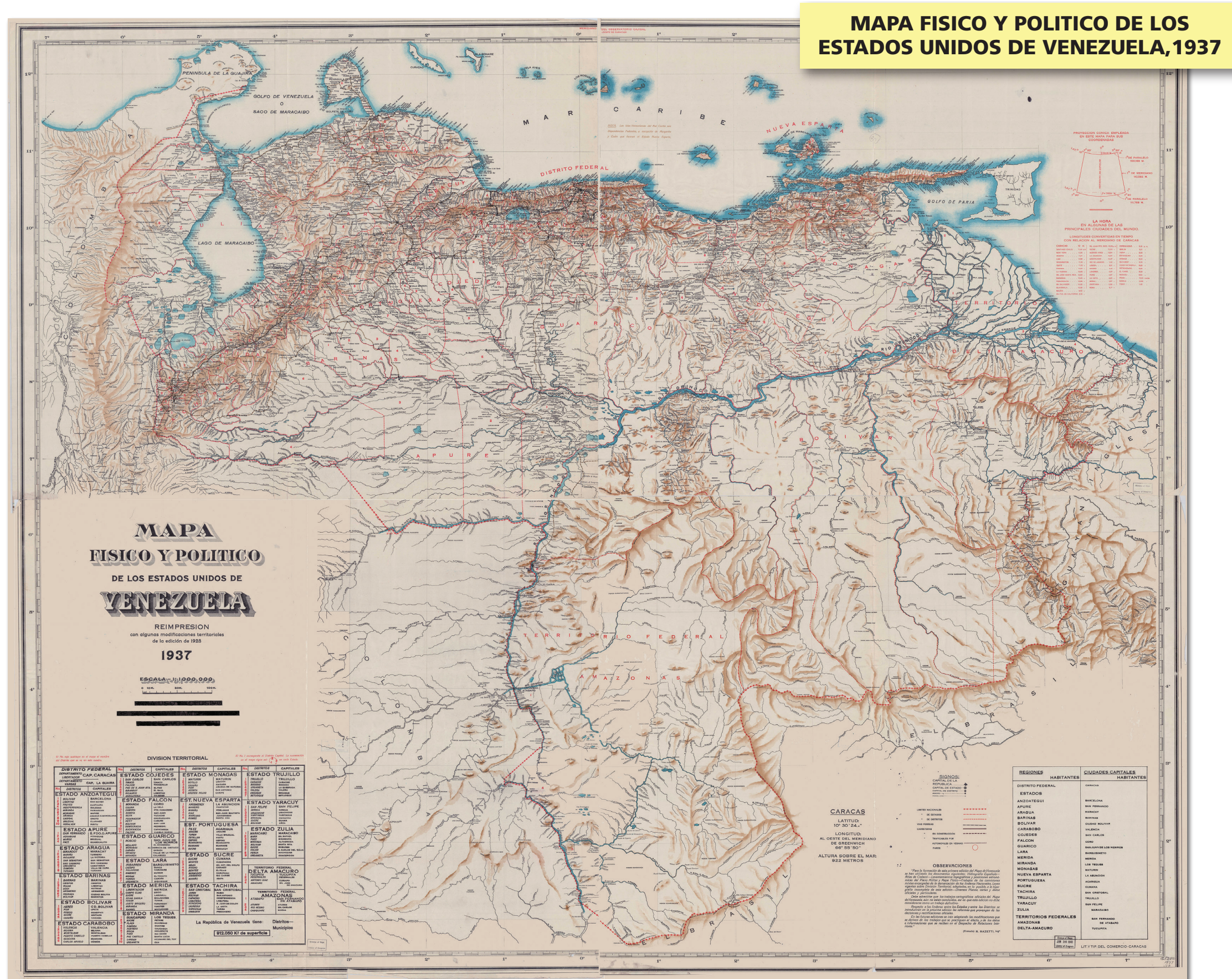


Source: Department of Internal Affairs of Venezuela, “Mapa Físico y Político de los Estados Unidos de Venezuela, Escala: 1: 1,000,000” (1a ed., 1928).

Figure 4.8



**Figure 4.9. [Original Map] Physical and Political Map of Venezuela (1937)**

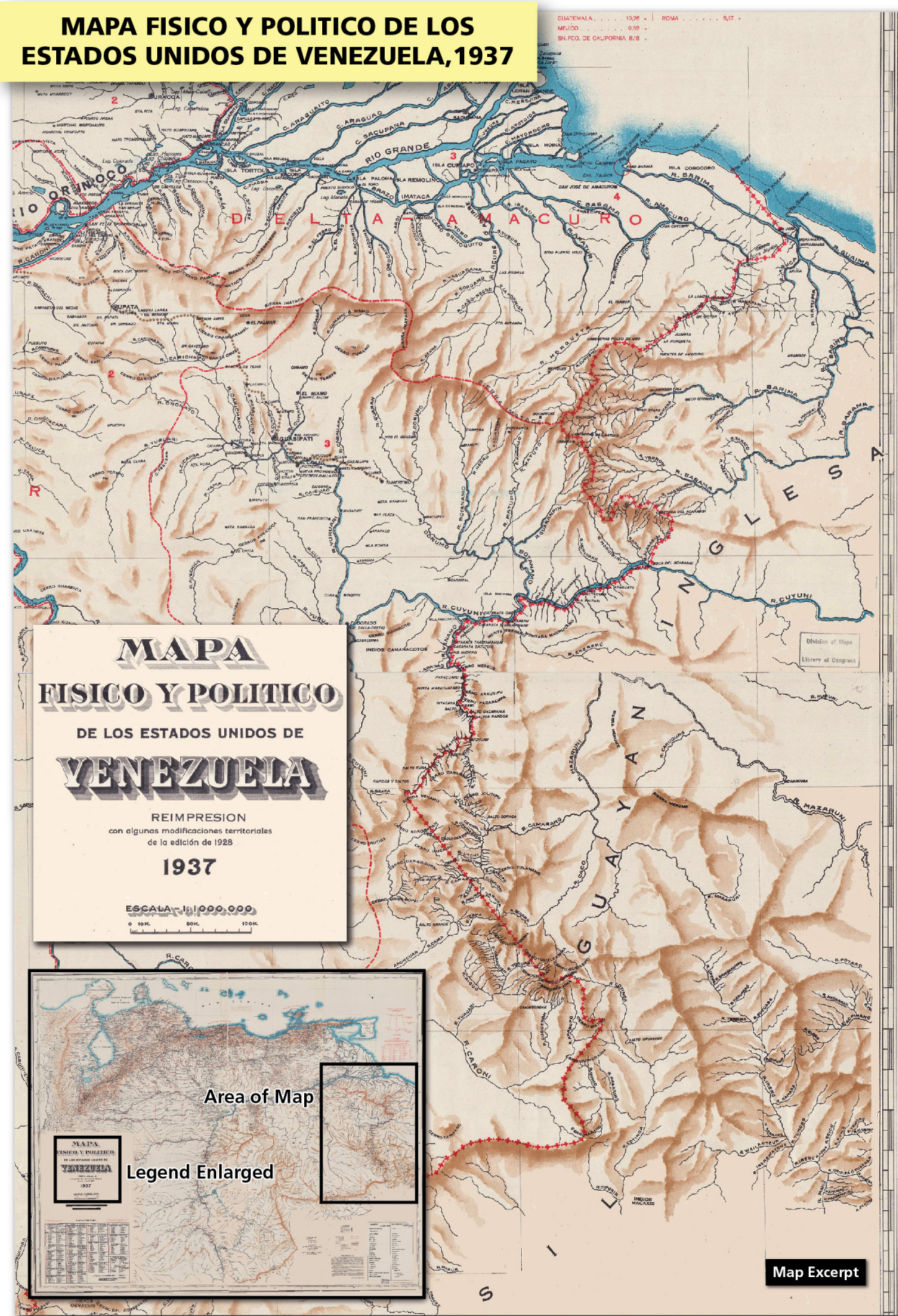


Source: “Mapa Físico y Político de los Estados Unidos de Venezuela” (1937), *reprint of* “Mapa Físico y Político de los Estados Unidos de Venezuela” (1928) (with territorial modifications).

**Figure 4.9**



Figure 4.9. [Enlargement] Physical and Political Map of Venezuela (1937)

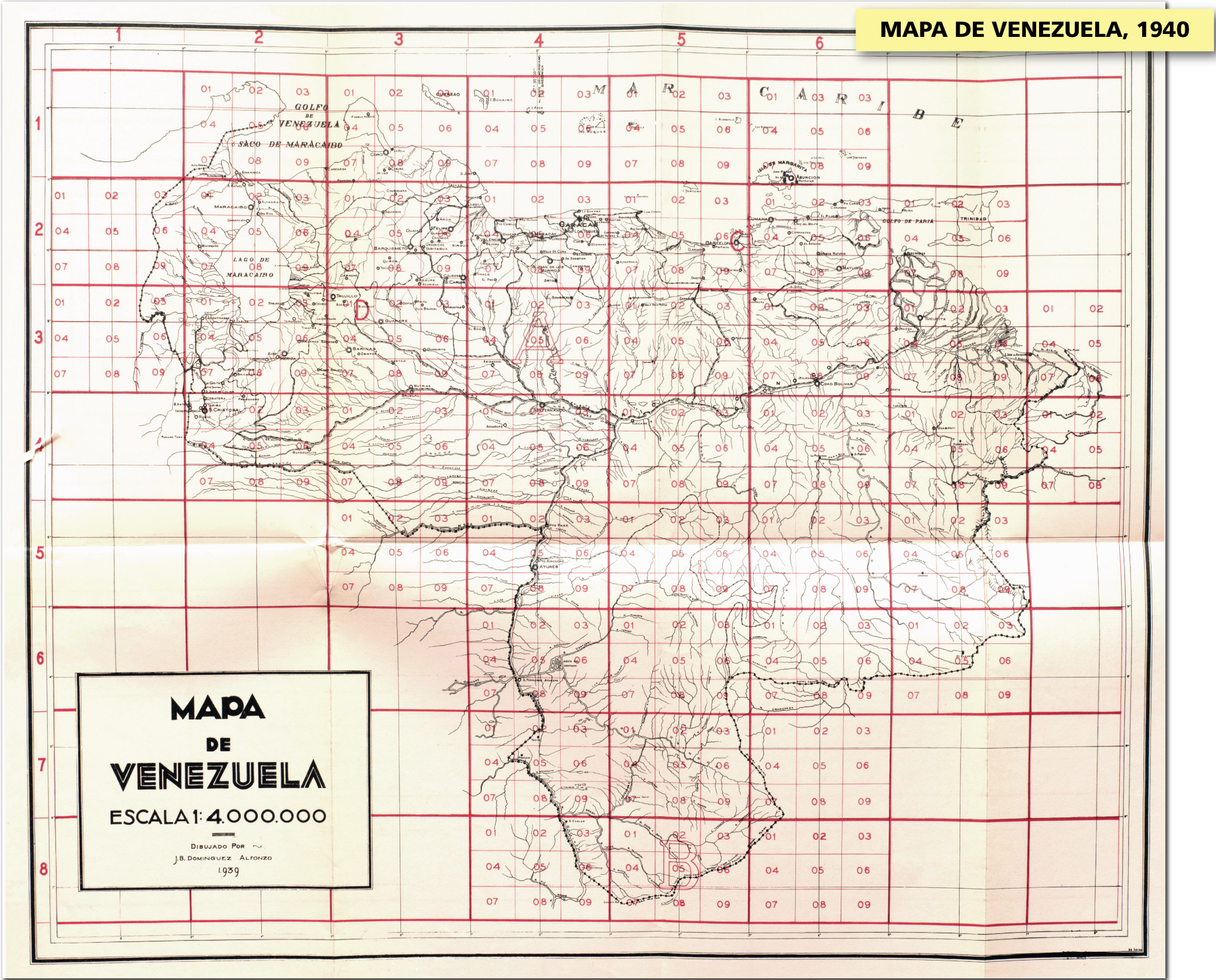


Source: “Mapa Físico y Político de los Estados Unidos de Venezuela” (1937), *reprint of* “Mapa Físico y Político de los Estados Unidos de Venezuela” (1928) (with territorial modifications).

Figure 4.9



Figure 4.10. [Original Map] Atlas of Venezuela (1940)

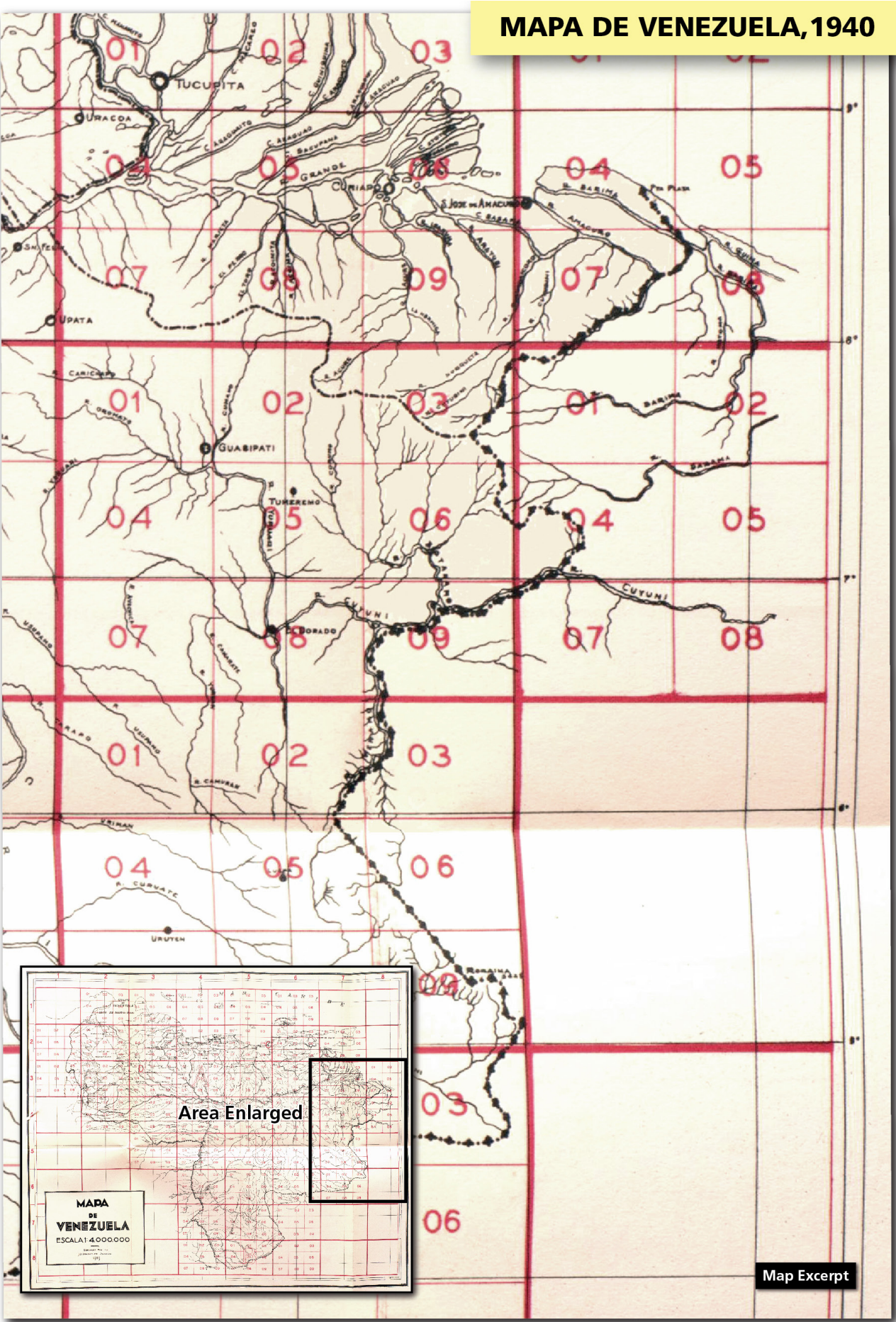


Source: U.S. of Venezuela, Ministry of Public Works, National Cartography Directorate, Division of Map and Atlas, “Mapa de los EE.UU. de Venezuela” (1939, published in 1940).

Figure 4.10



Figure 4.10. [Enlargement] Atlas of Venezuela (1940)

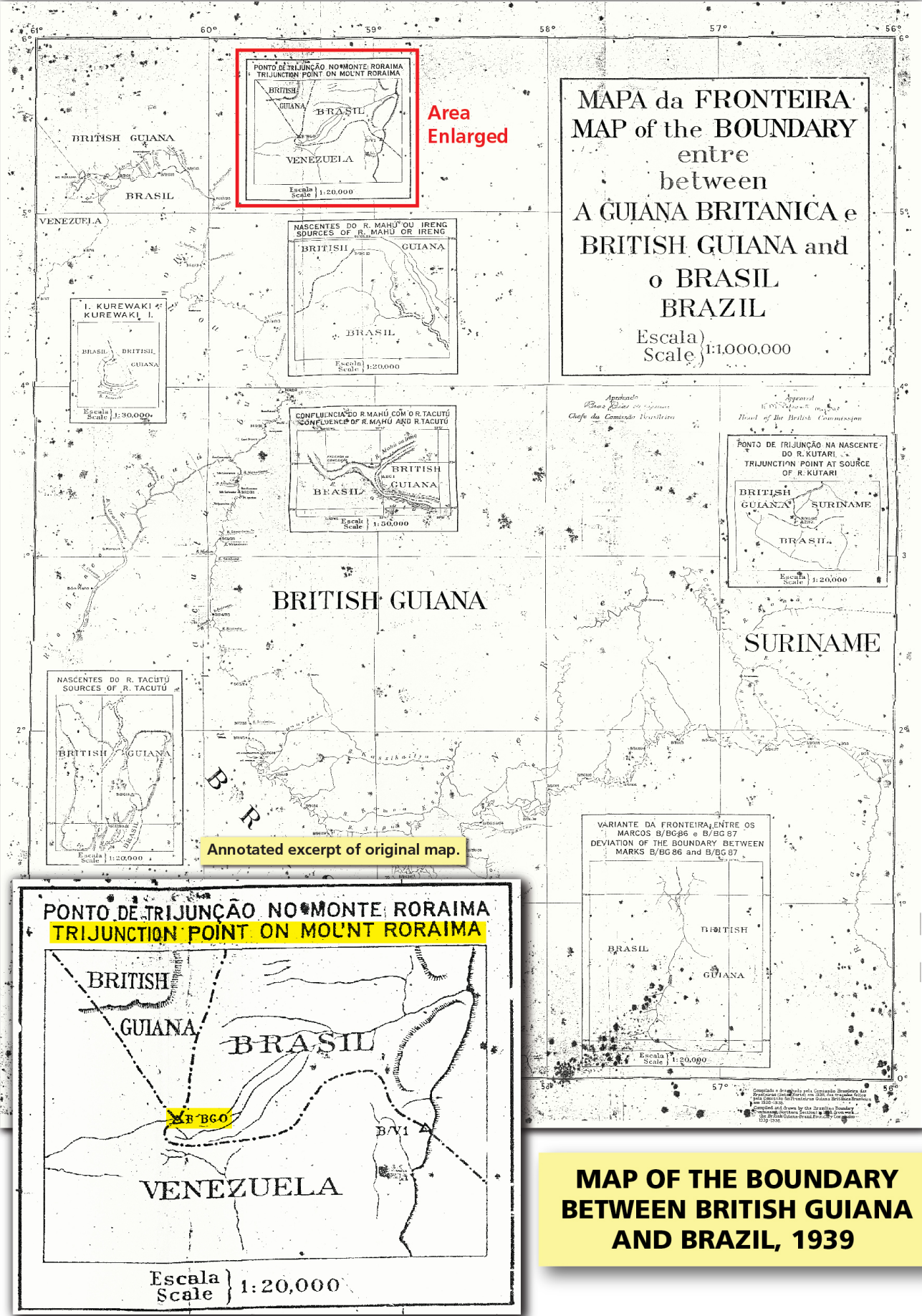


Source: U.S. of Venezuela, Ministry of Public Works, National Cartography Directorate, Division of Map and Atlas, “Mapa de los EE.UU. de Venezuela” (1939, published in 1940).

Figure 4.10



Figure 4.11. Map of the Boundary between British Guiana and Brazil (1939)

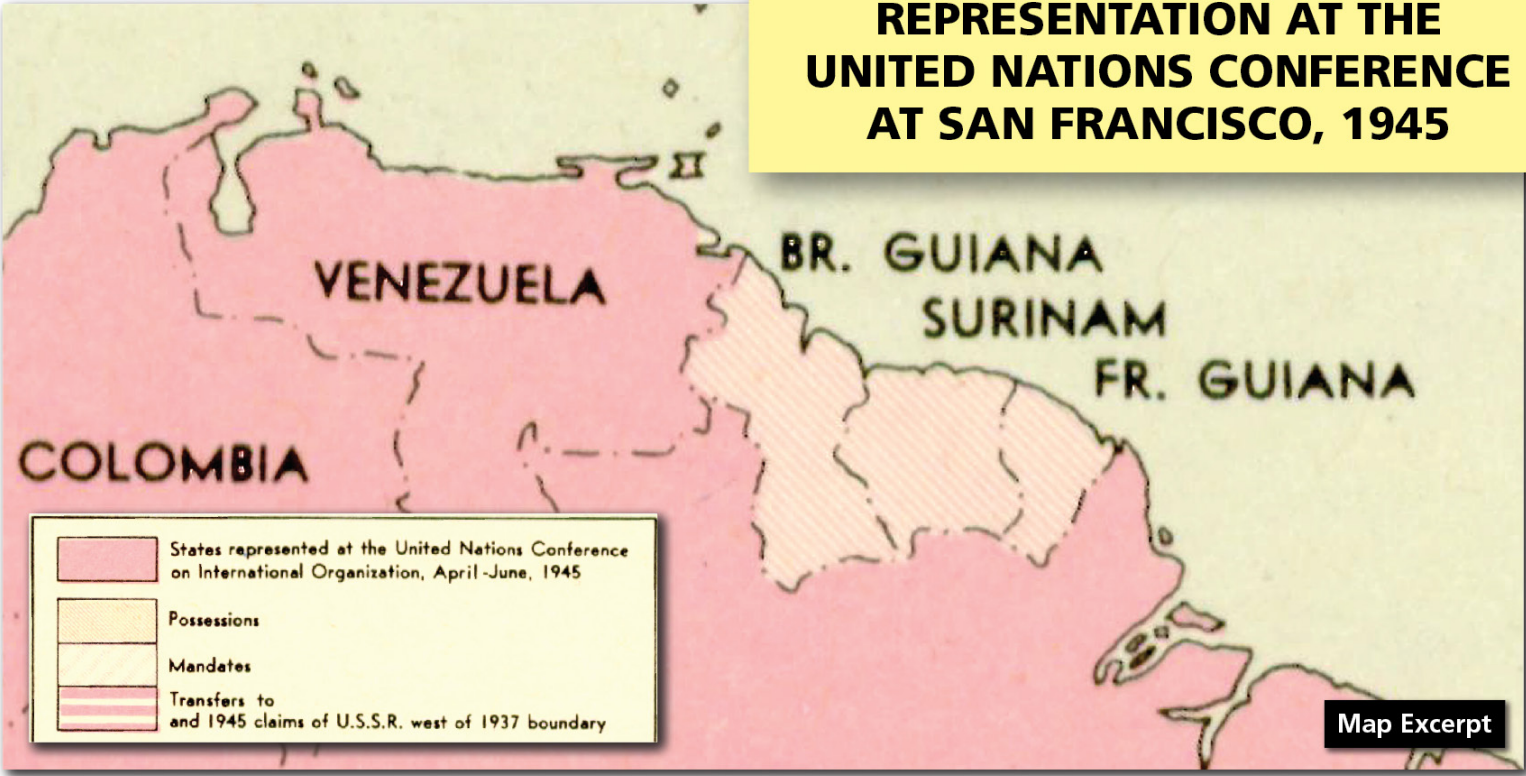
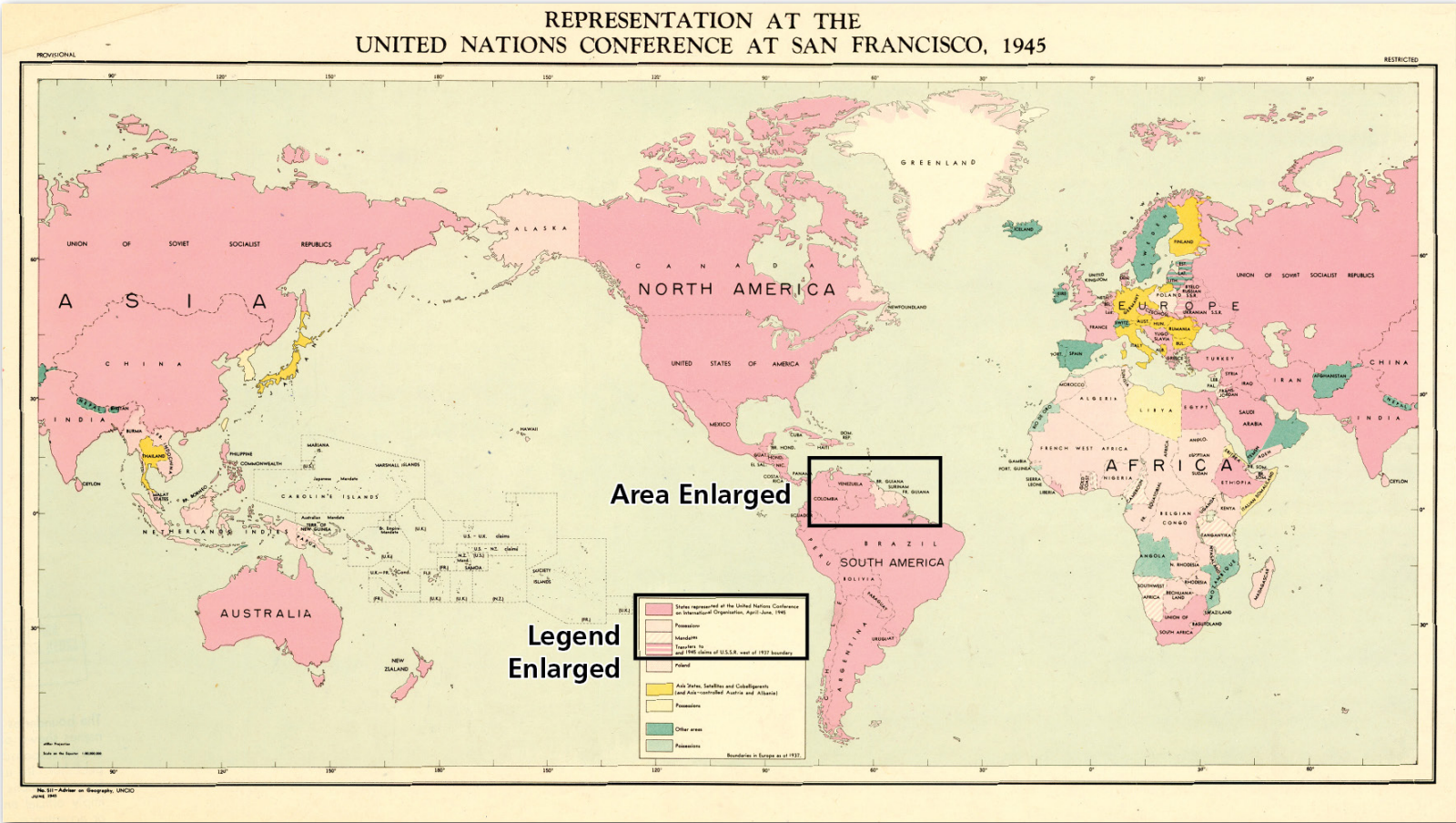


Source: British War Office, "Map of the Boundary between British Guiana and Brazil, Scale 1:1,000,000" (1939).

Figure 4.11



Figure 4.12. Map Presented at the 1945 United Nations Conference in San Francisco

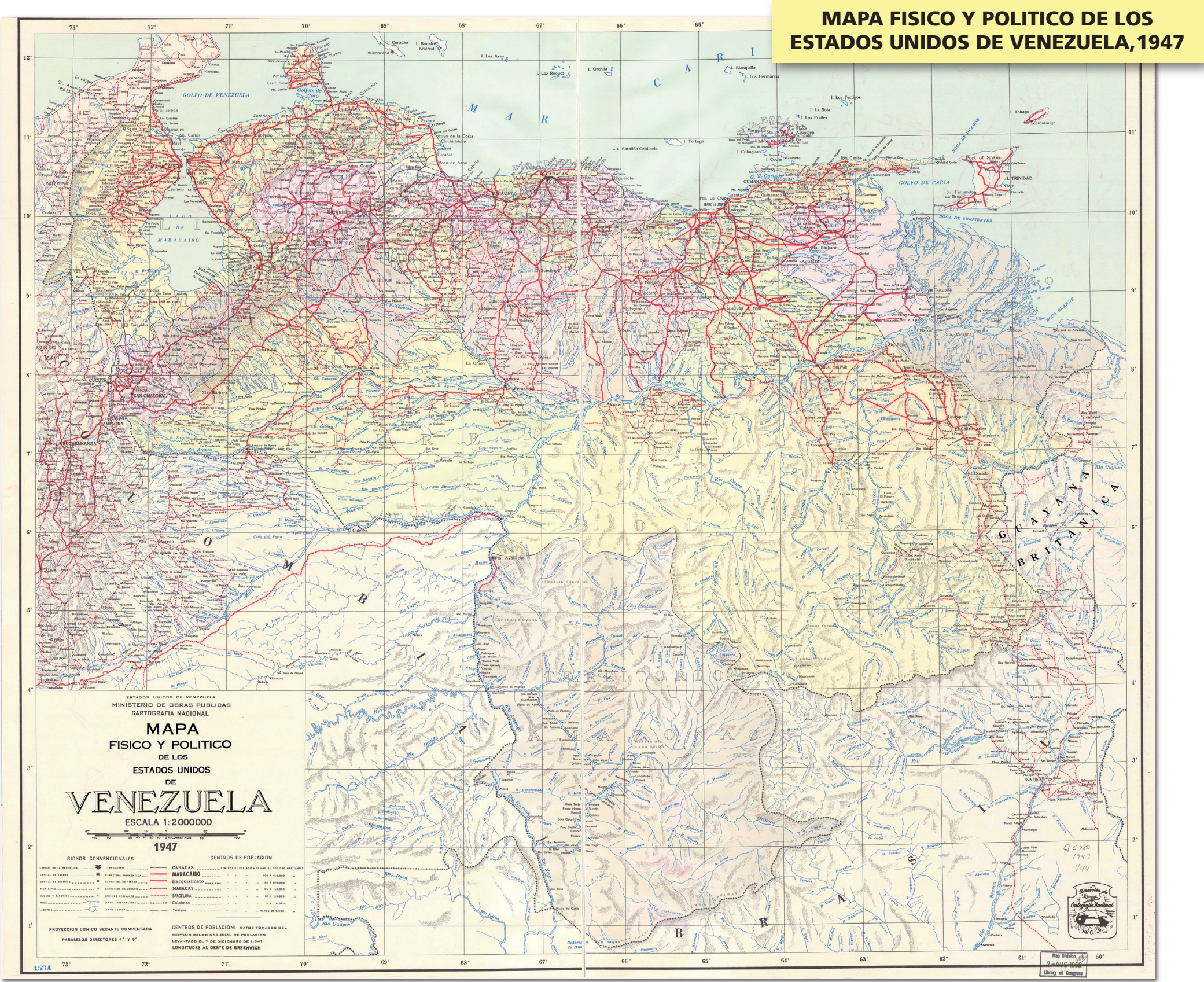


Source: “States Represented at the United Nations Conference on International Organisation”, San Francisco (Apr.-June 1945).

Figure 4.12



Figure 4.13. [Original Map] Physical and Political Map of Venezuela (1947)



Source: U.S. of Venezuela, Department of National Cartography, Ministry of Public Works, “Carta Aeronáutica de Venezuela, Escala: 1: 1,000,000 (5 sheets)” (1947).

Figure 4.13



**Figure 4.13**

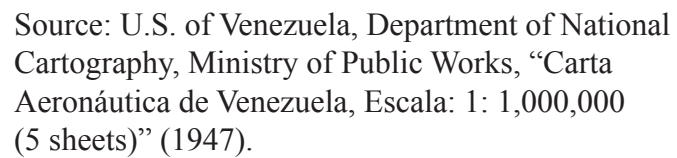




Figure 4.14. [Original Map] Physical and Political Map of Venezuela (1950)



Source: U.S. of Venezuela, Department of National Cartography, Ministry of Public Works, “Mapa Físico y Político de los Estados Unidos de Venezuela” (1950).

Figure 4.14



Figure 4.14. [Enlargement] Physical and Political Map of Venezuela (1950)



Source: U.S. of Venezuela, Department of National Cartography, Ministry of Public Works, “Mapa Físico y Político de los Estados Unidos de Venezuela” (1950).

Figure 4.14



[illegible]

**Figure 4.15**



Figure 4.15. [Enlargement] Physical and Political Map of Venezuela (1955)



Source: Republic of Venezuela, Department of National Cartography, Ministry of Public Works, “Mapa Físico y Político de la República de Venezuela” (1955).

Figure 4.15



Figure 4.16. [Original Map] Official Map of Venezuela (1956)



Source: U.S. of Venezuela, Department of National Cartography, Ministry of Public Works, “Mapa de la República de Venezuela” (1956).

Figure 4.16



Figure 4.16. [Enlargement] Official Map of Venezuela (1956)



Source: U.S. of Venezuela, Department of National Cartography, Ministry of Public Works, "Mapa de la República de Venezuela" (1956).

Figure 4.16



Figure 4.17. [Original Map] Official Map of Venezuela (1960)



Source: U.S. of Venezuela, Department of National Cartography, Ministry of Public Works, "Mapa de la República de Venezuela" (1960).

Figure 4.17



Figure 4.17. [Enlargement] Official Map of Venezuela (1960)

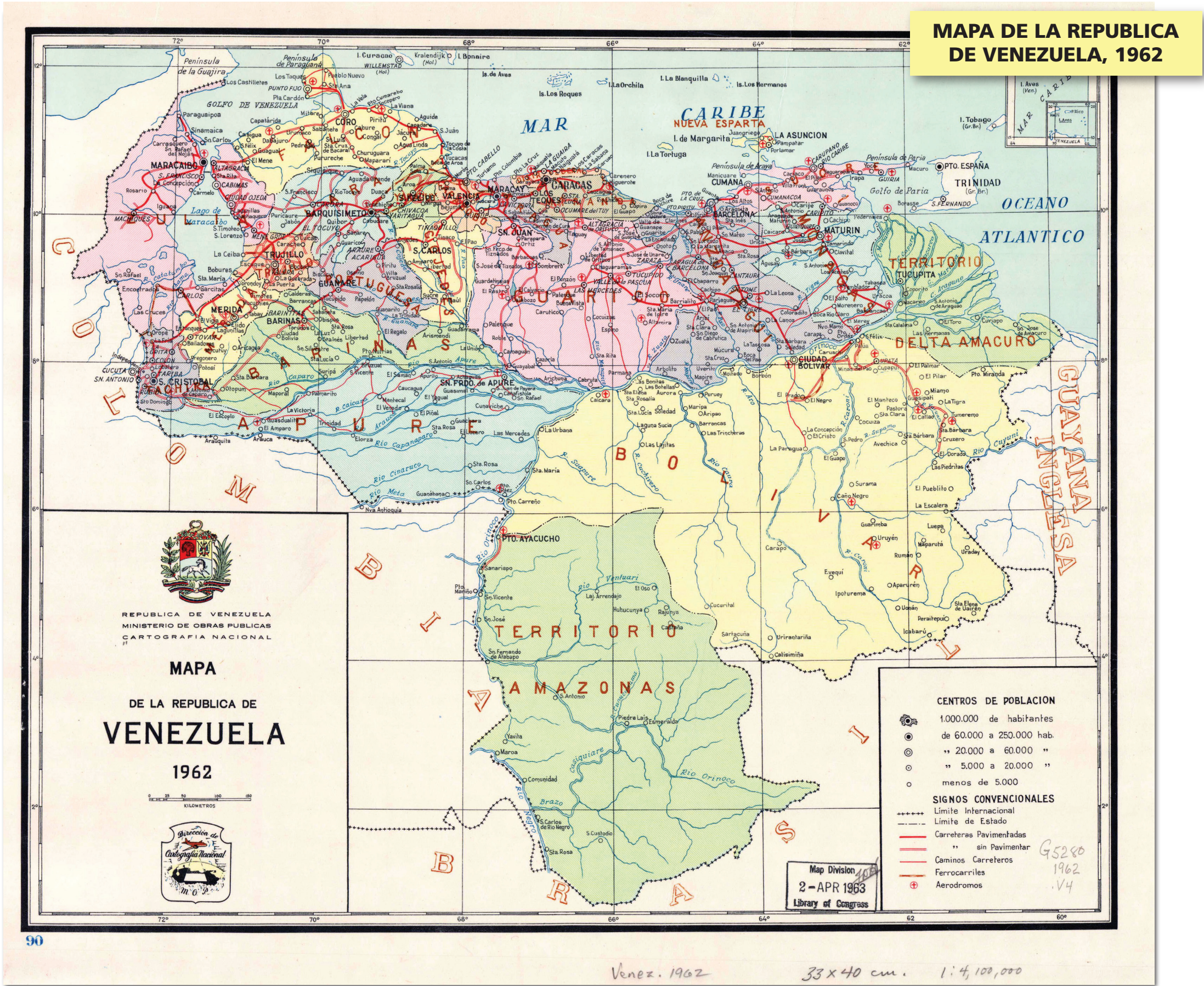


Source: U.S. of Venezuela, Department of National Cartography, Ministry of Public Works, "Mapa de la República de Venezuela" (1960).

Figure 4.17



Figure 4.18. [Original Map] Official Map of Venezuela (1962)



Source: U.S. of Venezuela, Department of National Cartography, Ministry of Public Works, "Mapa de la República de Venezuela" (1962).

Figure 4.18



Figure 4.18. [Enlargement] Official Map of Venezuela (1962)



Source: U.S. of Venezuela, Department of National Cartography, Ministry of Public Works, "Mapa de la República de Venezuela" (1962).

Figure 4.18



Figure 5.1 Physical and Political Map of Venezuela (1965)



Source: U.S. of Venezuela, Department of National Cartography, Ministry of Public Works, "Mapa Físico y Político de la República de Venezuela, Escala 1:4.000.000" (1965).

Figure 5.1